

materials:

- 1 x ready made dress
- Brother V3 Embroidery machine
- Embroidery yarn in the colours of the design
- Buttons for embellishing the front of the bodice

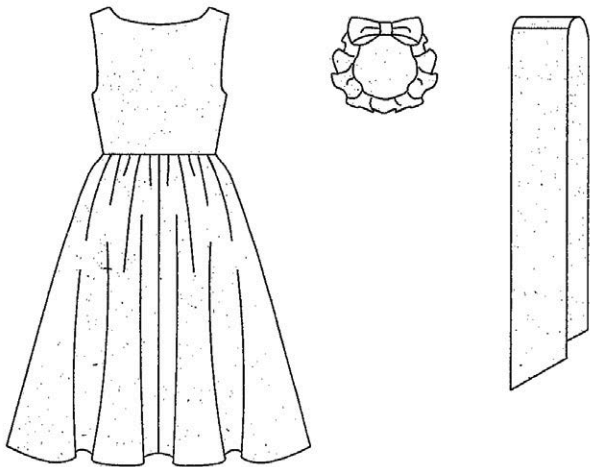
little
ray of
sunshine

Make a plain dress extra special with an embroidered bodice. It's so easy with the Brother V3 Embroidery machine!

The Brother V3 offers the following:

- Extra-large colour touch screen
- On-screen editing functions
- Full spectrum LED lighting
- Large embroidery area
- Over 200 exquisite embroidery designs and fonts
- Import other patterns and designs instantaneously
- Built-in thread charts
- Easy threading
- Automatic thread wiper
- Auto tension
- Thread sensors
- Slide-in frame mechanism





instructions:

1 The dress used here was made from Buttericks See&Sew range pattern number 3177. You can use any similar pattern. Choose one of the built-in designs of the Brother A3 embroidery machine, or download your own according to your theme.

2 Remember the embroidery design should be stored as a PES format for the Brother embroidery machines to recognize the embroidery design.

3 Should you wish to use one of the built-in designs or download a design from the internet and you would like to re-size or rotate or position your design you can do so on the screen of the Brother V3 Embroidery machine.

4 Frame your fabric in the correct frame size as required by your embroidery design.

5 The stabiliser you will use will depend on the fabric you are using for the dress, as a wide range of stabilisers are available. Enquire from the shop where you purchase your fabric or embroidery supplies, should you need

some assistance in this regard.

6 Always remember to line any clothing you want to embroider on, as the back of the embroidery may irritate the skin.

7 Use buttons to decorate the rest of the bodice prior to sewing the dress.

framing method for high density designs

1 Frame the stabiliser without the material first. Do the necessary research on the types of stabilisers available in the market as stabilisers are designed with specific tasks and fabrics in mind.

2 Pin the fabric on top of the stabiliser at the border of the frame thoroughly to prevent the material from puckering/gathering/pulling.

3 Be sure to mark exactly where you want the designs to be on the item you embroider. Use the grid that is included in the frame packaging.

4 Always use a good quality embroidery thread as this will avoid the constant breakage of the thread or needle. Good quality thread



also assists with the general maintenance of your machine. Cheaper embroidery threads have a lot of fluff that stays behind in the thread path resulting in tension distortion. The material could also get caught in between the teeth of the machine. All of the above cause severe damage to the lifetime and stitch quality of the embroidery machine.

5 It is important to do a lot of test embroidery designs when you're purchasing a new embroidery machine. You will get to know the importance of stitch quality, tension settings, height of the embroidery foot and using the correct stabiliser for the appropriate design and project you are working on. The dealer from whom you purchased your machine will be able to assist with this. **CH**

